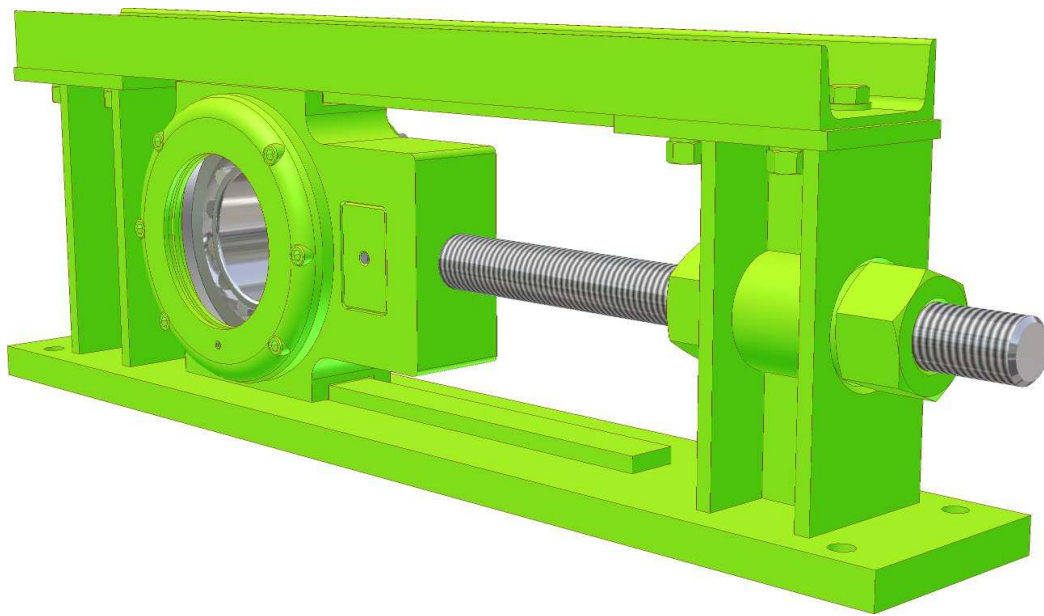


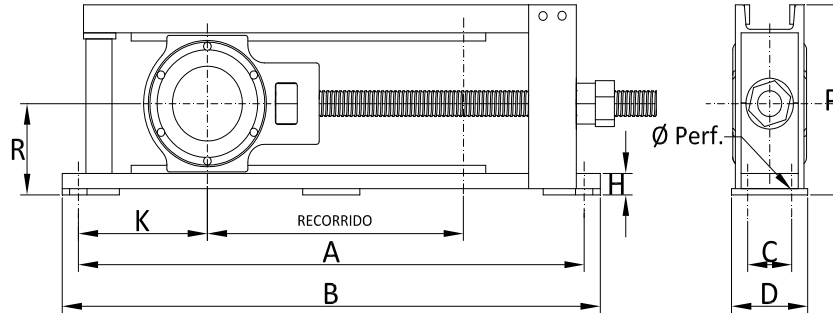
## Tensores de Tornillo Servicio Pesado Dimensiones y Códigos





## Tensores de Tornillo Servicio Pesado

$$\phi_{\text{eje}} < 4''$$

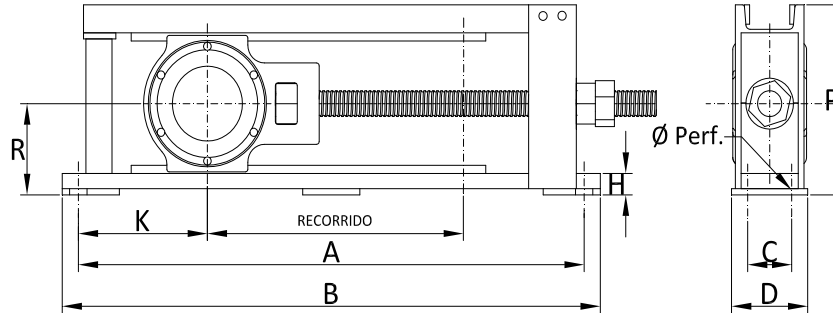


Diámetro Eje ["]	Código ["]	Recorrido ["]	A ["]	B ["]	C ["]	D ["]	H ["]	R ["]	P ["]	K ["]	Ø Perf. ["]
1 15/16	TTP12-11516	12	27 1/2	29 1/2	-	4	1 7/16	3 15/16	8 7/16	7 3/4	5/8
	TTP18-11516	18	33 1/2	35 1/2							
	TTP24-11516	24	39 1/2	41 1/2							
	TTP30-11516	30	45 1/2	47 1/2							
	TTP36-11516	36	51 1/2	53 1/2							
2 3/16	TTP12-20316	12	27 1/2	29 1/2	-	4	1 5/8	4 7/16	9 1/8	7 3/4	5/8
	TTP18-20316	18	33 1/2	35 1/2							
	TTP24-20316	24	39 1/2	41 1/2							
	TTP30-20316	30	45 1/2	47 1/2							
	TTP36-20316	36	51 1/2	53 1/2							
2 7/16	TTP12-20716	12	28 1/2	30 1/2	-	4	1 1/4	4 3/8	9 7/16	8 1/4	3/4
	TTP18-20716	18	34 1/2	36 1/2							
	TTP24-20716	24	40 1/2	42 1/2							
	TTP30-20716	30	46 1/2	48 1/2							
	TTP36-20716	36	52 1/2	54 1/2							
2 15/16	TTP12-21516	12	30 1/2	32 1/2	2	5	1 11/16	5 1/8	10 13/16	9 1/4	3/4
	TTP18-21516	18	36 1/2	38 1/2							
	TTP24-21516	24	42 1/2	44 1/2							
	TTP30-21516	30	48 1/2	50 1/2							
	TTP36-21516	36	54 1/2	56 1/2							
3 7/16	TTP12-30716	12	32	34 1/4	2	5	1 7/8	7	11 7/8	10	3/4
	TTP18-30716	18	38	40 1/4							
	TTP24-30716	24	44	46 1/4							
	TTP30-30716	30	50	52 1/4							
	TTP36-30716	36	56	58 1/4							
3 15/16	TTP12-31516	12	36	38 1/2	2 1/2	6	2 1/16	7	18 1/8	12	3/4
	TTP18-31516	18	42	44 1/2							
	TTP24-31516	24	48	50 1/2							
	TTP30-31516	30	54	56 1/2							
	TTP36-31516	36	60	62 1/2							

Medidas pueden ser modificadas para adaptarse a requerimientos del Cliente.  
 Diseño sujeto a cambio sin previo aviso.

## Tensores de Tornillo Servicio Pesado

$\phi_{\text{eje}} > 4''$



Diámetro Eje ["]	Código ["]	Recorrido ["]	A ["]	B ["]	C ["]	D ["]	H ["]	R ["]	P ["]	K ["]	Ø Perf. ["]
4 7/16	TTP12-40716	12	40 3/4	45 3/4	5	9	2 1/4	7 1/2	18 15/16	14 3/8	1 1/8
	TTP18-40716	18	46 3/4	51 3/4							
	TTP24-40716	24	52 3/4	57 3/4							
	TTP30-40716	30	58 3/4	63 3/4							
	TTP36-40716	36	64 3/4	69 3/4							
TTP42-40716	42	70 1/4	75 3/4								
4 15/16	TTP12-41516	12	44 1/2	49 1/2	5 1/2	10	2 1/16	8 1/2	21 5/16	16 1/4	1 1/8
	TTP18-41516	18	50 1/2	55 1/2							
	TTP24-41516	24	56 1/2	61 1/2							
	TTP30-41516	30	62 1/2	67 1/2							
	TTP36-41516	36	68 1/2	73 1/2							
TTP42-41516	42	74 1/2	79 1/2								
5 7/16	TTP18-50716	18	55	61	7	12	2 5/16	10 3/16	26 13/16	18 1/2	1 1/2
	TTP30-50716	30	67	73							
	TTP42-50716	42	79	85							
5 15/16	TTP18-51516	18	55	61	7	12	2 13/16	10 9/16	26 13/16	18 1/2	1 1/2
	TTP30-51516	30	67	73							
	TTP42-51516	42	79	85							
6 15/16	TTP18-61516	18	55	61	7	12	2 7/8	10 9/16	27 1/4	18 1/2	1 1/2
	TTP30-61516	30	67	73							
	TTP42-61516	42	79	85							

# TOP ANGLE TAKE-UP (TUTA)

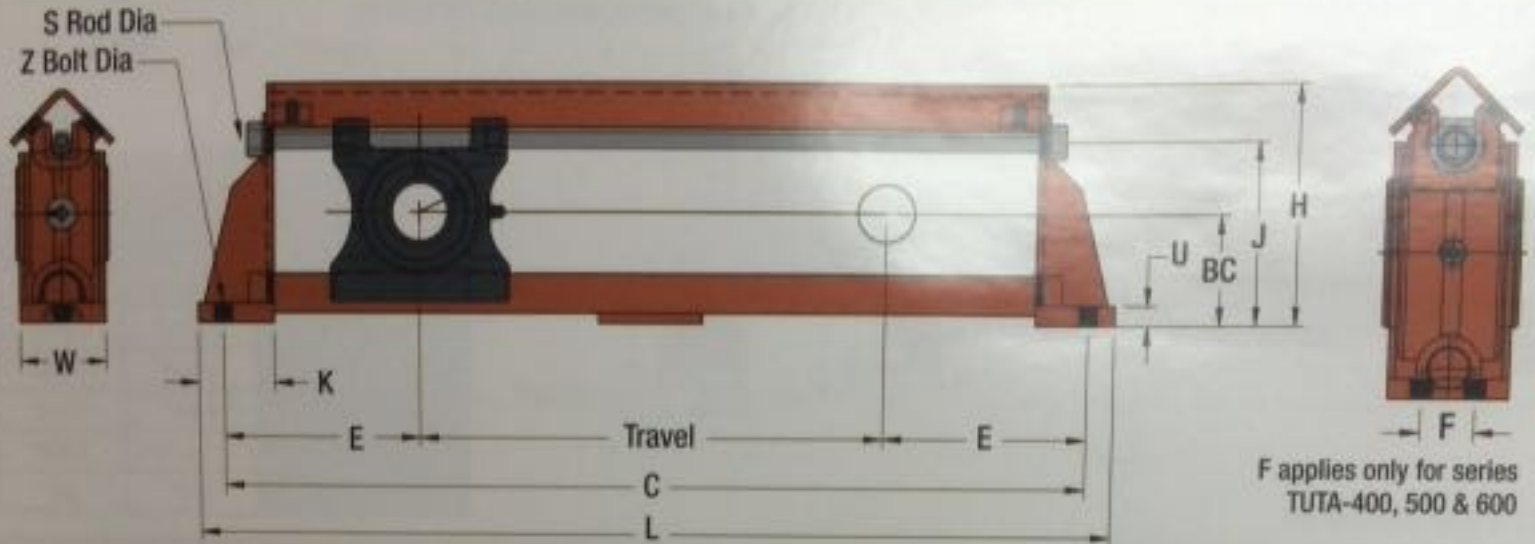


FIGURE 4.5 TUTA DRAWINGS

TABLE 7.5 TUTA DIMENSIONS

Part Number	Travel	WT (lbs)	BC	C	E	F	H	J	K	L	S Rod Dia	U	W	Z Bolt Dia
TUTA-100-12	12	35		26-1/2										
TUTA-100-18	18	47	3-15/16	32-1/2	7-1/4	N/A	8-3/8	6-5/16	3	28-1/2	3/4	3/4	3-1/2	5/8
TUTA-100-24	24	52		38-1/2						34-1/2				
										40-1/2				
TUTA-200-12	12	38		27-1/2										
TUTA-200-18	18	49	4-3/16	33-1/2	7-3/4	N/A	8-15/16	6-15/16	3	29-1/2	3/4	3/4	3-1/2	5/8
TUTA-200-24	24	56		39-1/2						35-1/2				
										41-1/2				
TUTA-300-12	12	45		28-1/2										
TUTA-300-18	18	58		34-1/2						30-1/2				
TUTA-300-24	24	65		40-1/2						36-1/2				
TUTA-300-30	30	80	4-3/8	46-1/2	8-1/4	N/A	9-15/16	7-3/8	3-1/2	42-1/2	1	3/4	4	3/4
TUTA-300-36	36	88		52-1/2						48-1/2				
TUTA-300-42	42	97		58-1/2						54-1/2				
TUTA-300-48	48	106		64-1/2						60-1/2				
										66-1/2				
TUTA-400-12	12	59		30-1/2										
TUTA-400-18	18	71		36-1/2						32-1/2				
TUTA-400-24	24	80		42-1/2						38-1/2				
TUTA-400-30	30	90	4-15/16	48-1/2	9-1/4	2	10-7/8	8-5/16	3-1/2	44-1/2	1	3/4	4-1/2	5/8
TUTA-400-36	36	99		54-1/2						50-1/2				
TUTA-400-42	42	108		60-1/2						56-1/2				
TUTA-400-48	48	117		66-1/2						62-1/2				
										68-1/2				
TUTA-500-12	12	70		32										
TUTA-500-18	18	78		38						34-1/2				
TUTA-500-24	24	89		44						40-1/2				
TUTA-500-30	30	102	5-7/16	50	10	2	12-5/16	9-7/16	4	46-1/2	1-1/4	3/4	4-1/2	3/4
TUTA-500-36	36	112		56						52-1/2				
TUTA-500-42	42	122		62						58-1/2				
TUTA-500-48	48	131		68						64-1/2				
										70-1/2				
TUTA-600-12	12	87		36										
TUTA-600-18	18	97		42						38-1/2				
TUTA-600-24	24	106		48						44-1/2				
TUTA-600-30	30	116	7	54	12	2-1/2	14-1/16	11-3/8	4-1/2	50-1/2	1-1/4	3/4	5-1/2	3/4
TUTA-600-36	36	125		60						56-1/2				
TUTA-600-42	42	135		66						62-1/2				
TUTA-600-48	48	145		72						68-1/2				
										74-1/2				

# WIDE SLOT TAKE-UP (TUWS)

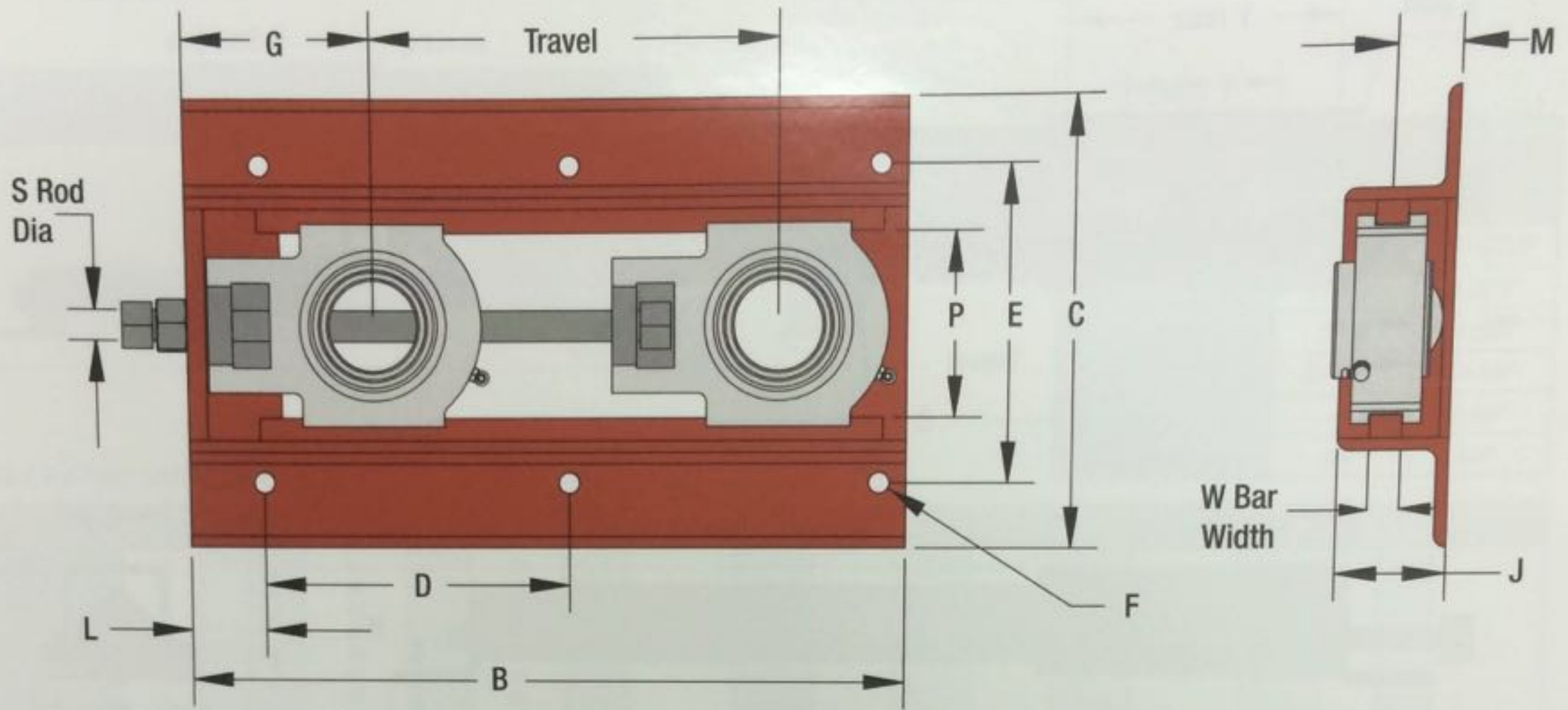


FIGURE 4.2 TUWS DRAWINGS

TABLE 7.2 TUWS DIMENSIONS

Part Number	Travel Distance	Wt. (lbs)	B	C	D	E	F Bolt Dia.	# of Bolts	G	J	L	M	P	S Rod Dia	W Bar Width
TUWS-100-1.5	1-1/2	5	7-1/2		5-3/8			4							
TUWS-100-3	3	6	9		6-7/8			4							
TUWS-100-6	6	7	12	7-5/16	4-15/16	5-9/16	7/16	4	2-15/16	2	1	1-1/16	3-1/16	5/8	1/2
TUWS-100-9	9	8	15		6-7/16			6							
TUWS-100-12	12	10	18		7-15/16			6							
TUWS-150-3	3	6	9-1/8		6-7/16			4							
TUWS-150-6	6	8	12-1/8		9-7/16			4							
TUWS-150-9	9	9	15-1/8	7-13/16	6-7/32	6-1/16	7/16	4	3-11/16	2	1	1-1/4	3-9/16	3/4	1/2
TUWS-150-12	12	10	18-1/8		7-23/32			6							
TUWS-150-18	18	14	24-1/8		10-23/32			6							
TUWS-200-3	3	11	10-3/4		8-1/2			4							
TUWS-200-6	6	13	13-3/4		11-1/2			4							
TUWS-200-9	9	16	16-3/4	8-9/16	7-1/4	7-5/16	1/2	4	4-5/16	2-1/2	1-1/8	1-7/16	4-1/16	1	5/8
TUWS-200-12	12	18	19-3/4		8-3/4			6							
TUWS-200-18	18	25	25-3/4		11-3/4			6							
TUWS-200-24	24	29	31-3/4		14-3/4			6							
TUWS-250-3	3	17	11-3/4		9-1/2			4							
TUWS-250-6	6	20	14-3/4		12-1/2			4							
TUWS-250-9	9	24	17-3/4		15-1/12			4							
TUWS-250-12	12	28	20-3/4	10-11/16	9-1/4	8-5/8	9/16	4	5-11/16	3	1-1/8	1-1/2	5-3/16	1-1/4	1
TUWS-250-18	18	35	26-3/4		12-1/4			6							
TUWS-250-24	24	43	32-3/4		15-1/4			6							
TUWS-250-30	30	50	38-3/4		18-1/4			6							
TUWS-300-9	9	41	20-7/8		17-1/2			4							
TUWS-300-12	12	46	23-7/8		10-1/4			6							
TUWS-300-18	18	57	29-7/8	12	13-1/4	10-1/4	5/8	6	6-1/2	3-1/2	2-1/2	2	6	1-1/2	1
TUWS-300-24	24	67	35-7/8		16-1/4			6							
TUWS-300-30	30	78	41-7/8		19-1/4			6							
TUWS-350-9	9	42	20-7/8		17-1/2			4							
TUWS-350-12	12	47	23-7/8		10-1/4			6							
TUWS-350-18	18	58	29-7/8	12-9/16	13-1/4	10-13/16	5/8	6	6-1/2	3-1/2	2-1/2	2	6-9/16	1-1/2	1
TUWS-350-24	24	68	35-7/8		16-1/4			6							
TUWS-350-30	30	79	41-7/8		19-1/4			6							

To order a wideslot take-up cover add "C" at the end of the part #.  
 Example TUWS-350-18C, (This only orders a cover, not the take-up.)

# TELESCOPING TUBE TAKE-UP (TUTT)

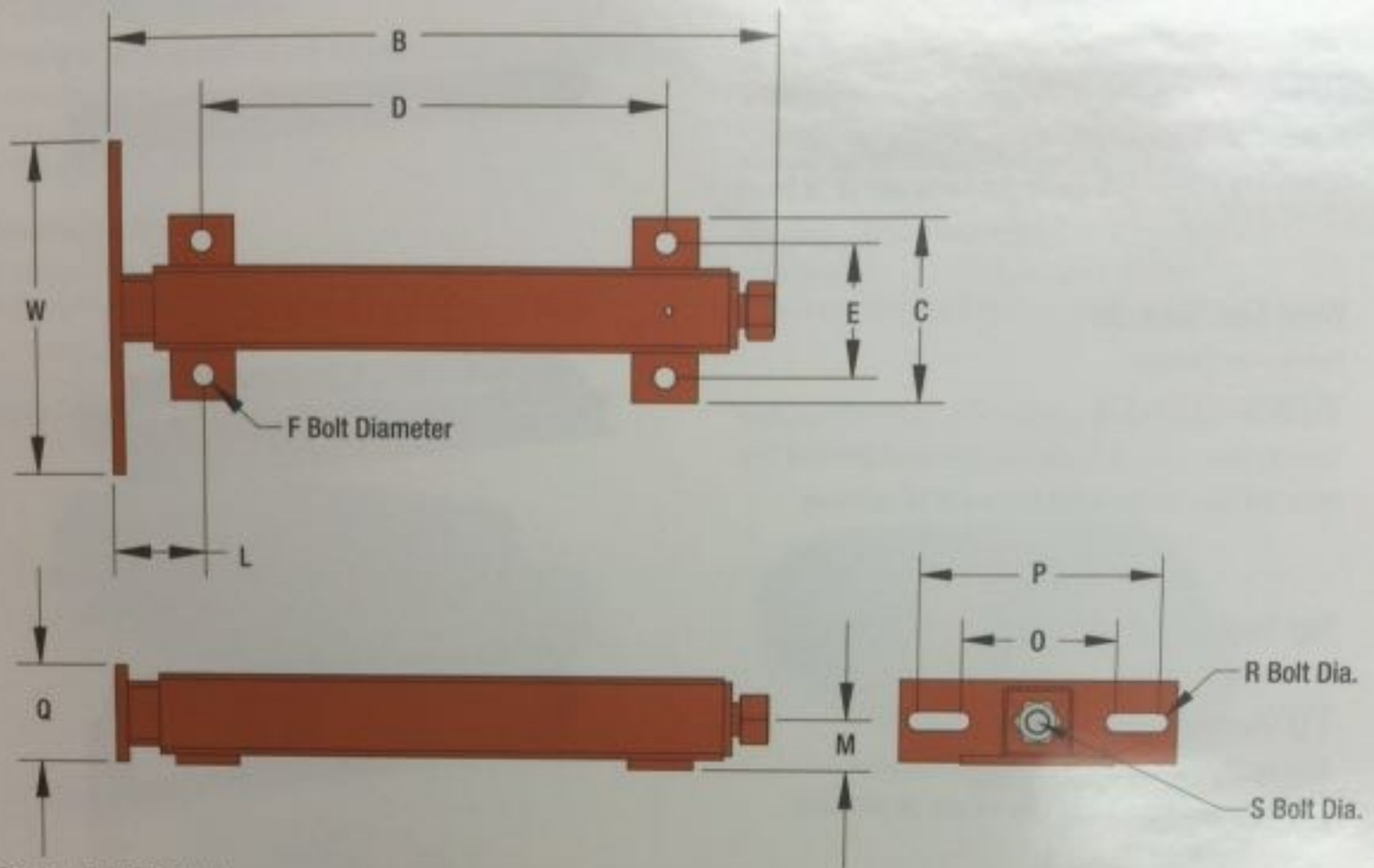


FIGURE 4.1 TUTT DRAWINGS

TABLE 7.1 TUTT DIMENSIONS

Part Number	Flange	Wt. (lbs)	B	C	D	E	F Bolt Dia.	L	M	O	P	Q	R Bolt Dia.	S Flange Dia.	W	Bracing Range*
TUTT-100-3	3	3	7-1/8		3-9/16											
TUTT-100-6	6	4	10-5/8	3-11/16	7-1/16	2-5/8	1/2	1-3/4	1-3/16	3-7/16	6-1/16	1-1/2	3/8	5/8	5-1/4	1/2" TO 1"
TUTT-100-9	9	5	14-5/8		11-1/16											
TUTT-250-3	3	5	8-9/16		4-3/8											
TUTT-250-6	6	7	11-1/2	4	7-3/8	3	1/2	2	1-3/16	3-9/16	5-5/16	2	1/2	3/4	7	3/4" TO 1-3/4"
TUTT-250-9	9	8	14-1/2		10-3/8											
TUTT-250-12	12	9	17-1/2		13-3/8											
TUTT-300-6	6	16	11-7/16		6-1/8											
TUTT-300-9	9	16	15-1/8	5-1/4	10-1/8	4	5/8	2-3/8	1-1/2	5-9/16	8-11/16	2-3/4	5/8	1	10	1-3/4" TO 2-15/16"
TUTT-300-12	12	21	19-1/8		14-1/8											
TUTT-300-18	18	26	26-1/8		21-1/8											
TUTT-350-9	9	24	19		12-5/8 to 13	4-1/2	5/8	2-1/2	1-3/4	5-9/16	8-11/16	3	5/8	1	10	1-3/4" TO 2-15/16"
TUTT-350-12	12	28	22	6	15-5/8 to 16											
TUTT-350-18	18	35	28		21-5/8 to 22											
TUTT-350-24	24	43	34		27-5/8 to 28											
TUTT-400-12	12	52	27-3/4		20											
TUTT-400-18	18	62	33-3/4		26											
TUTT-400-24	24	72	39-3/4	7-1/2	32	5-1/2	3/4	3-1/2	2-1/8	6-1/2	11-3/4	3-1/2	3/4	1-1/2	14	2-7/16" TO 3-1/2"
TUTT-400-36	36	92	51-3/4		44											
TUTT-400-48	48	112	63-3/4		56											
TUTT-500-18	18	216	41-3/8		31											
TUTT-500-24	24	243	47-3/8		37											
TUTT-500-36	36	299	59-3/8	11-1/2	49	9	1	3-7/8	3-1/2	Made To Order	Made To Order	7	Made To Order	2	20	3-11/16" TO 6"
TUTT-500-48	48	366	71-3/8		61											
TUTT-500-60	60	410	83-3/8		73											

Add "D" to the end of part number for a direct weld. No bolt flange or foot plate is included.





# LIGHT DUTY TAKE-UP (TULD)

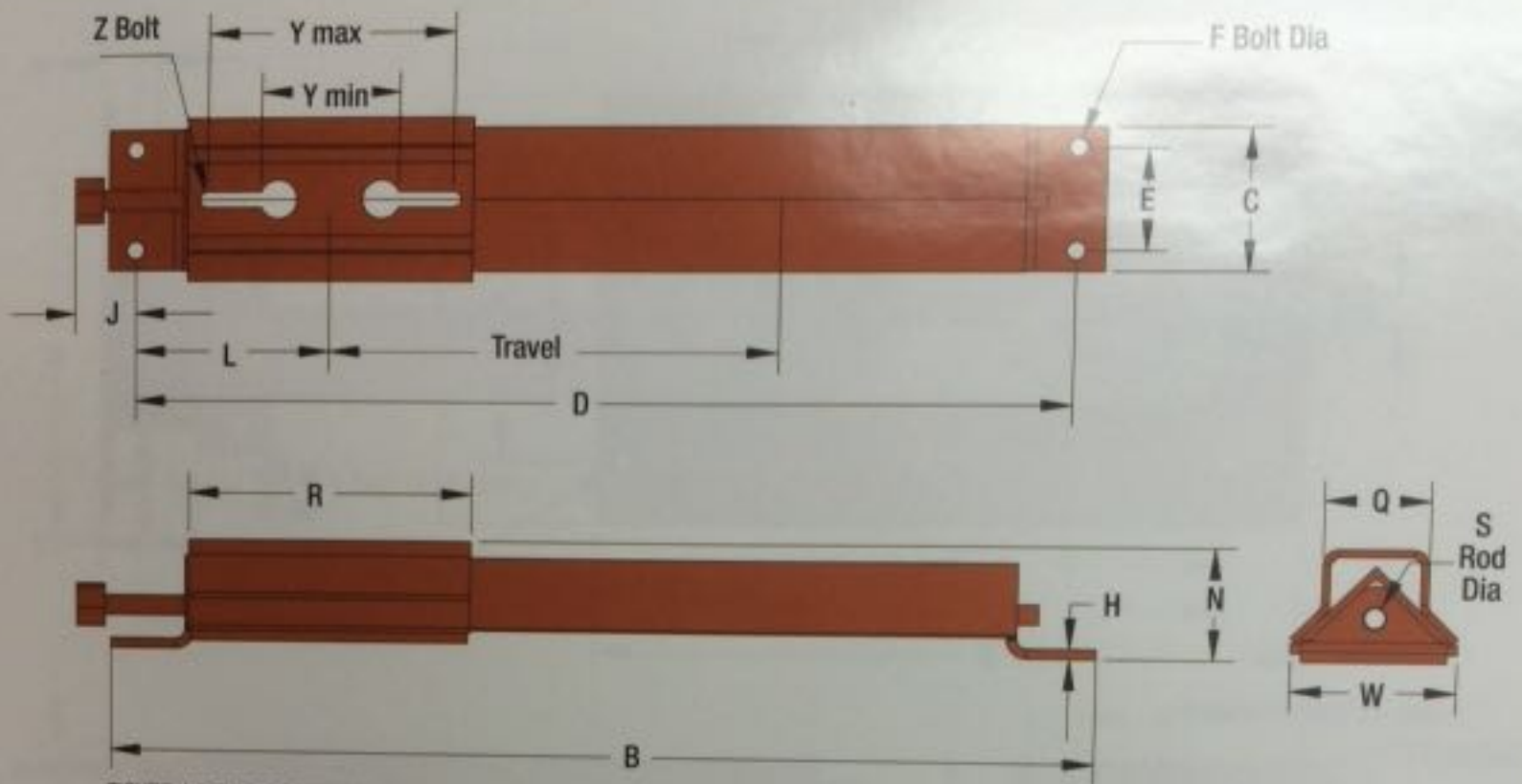


FIGURE 4.3 TULD DRAWINGS

TABLE 7.3 TULD DIMENSIONS

Part Number	Travel	WT (lbs)	B	C	D	E	F Bolt Dia	H	J	L	N	Q	R	S Rod Dia	W	Y (bolt to bolt)		Z Bolt Dia x Length
																Min	Max	
TULD-100-6	6	12	19-1/2	3 1/2	18													
TULD-100-9	9	12	22	3 1/2	20-1/2													
TULD-100-12	12	14	25	3 1/2	23-1/2	2-1/2	3/8	1/4	1-3/4	4-1/4	2-3/4	1-1/2	5-3/8	3/4	3-3/4	2-7/8	4-3/4	3/8 x 1-1/2
TULD-100-18	18	17	33-1/2	3 1/2	32													
TULD-200-6	6	13	19-1/2	3 1/2	18													
TULD-200-9	9	14	22	3 1/2	20-1/2													
TULD-200-12	12	15	25	3 1/2	23-1/2	2-1/2	3/8	1/4	1-3/4	5-1/4	2-3/4	2	7-1/4	3/4	3-3/4	4-7/8	6-1/4	1/2 x 2-1/2
TULD-200-18	18	18	33-1/2	3 1/2	32													
TULD-200-24	24	20	39-1/2	3 1/2	38													
TULD-300-6	6	14	22-1/4	3 1/2	20-3/4													
TULD-300-12	12	17	28-1/4	3 1/2	26-3/4													
TULD-300-18	18	19	34-1/4	3 1/2	32-3/4	2-1/2	1/2	1/4	1-3/4	5-5/8	2-3/4	2-1/2	8-3/8	3/4	3-3/4	5-3/4	7-3/8	5/8 x 3
TULD-300-24	24	21	40-1/4	3 1/2	38-3/4													
TULD-300-30	30	23	46-1/4	3 1/2	44-3/4													
TULD-400-6	6	17	22-1/4	4 3/4	20-1/2													
TULD-400-12	12	20	28-1/4	4 3/4	26-1/2													
TULD-400-18	18	23	34-1/4	4 3/4	32-1/2													
TULD-400-24	24	25	40-1/4	4 3/4	38-1/2	3	5/8	5/16	1-7/8	6-5/8	3-3/16	2-1/2	8-7/8	3/4	4-3/8	6-3/8	7-7/8	5/8 x 3
TULD-400-30	30	27	46-1/4	4 3/4	44-1/2													
TULD-400-36	36	30	52-1/4	4 3/4	50-1/2													
TULD-400-12	12	37	33-1/4	5	31-1/2													
TULD-400-18	18	40	39-1/4	5	37-1/2													
TULD-400-24	24	44	45-1/4	5	43-1/2													
TULD-400-30	30	48	51-1/4	5	49-1/2	3	3/4	5/16	2-3/16	8-1/2	4-1/8	3-3/4	12-1/2	1	6	7-1/4	11-1/2	3/4 x 3 1/2
TULD-400-36	36	51	57-1/4	5	55-1/2													
TULD-400-42	42	56	63-1/4	5	61-1/2													
TULD-400-48	48	59	69-1/4	5	67-1/2													
TULD-500-12	12	37	33-1/4	5	31-1/2													
TULD-500-18	18	40	39-1/4	5	37-1/2													
TULD-500-24	24	44	45-1/4	5	43-1/2													
TULD-500-30	30	48	51-1/4	5	49-1/2	3	3/4	5/16	2-3/16	8-1/2	4-1/8	3-3/4	12-5/8	1	6	7-1/2	11-5/8	7/8 x 4
TULD-500-36	36	52	57-1/4	5	55-1/2													
TULD-500-42	42	56	63-1/4	5	61-1/2													
TULD-500-48	48	60	69-1/4	5	67-1/2													

# HEAVY DUTY TAKE-UP (TUHD)

FIGURE 4.4 TUHD DRAWINGS

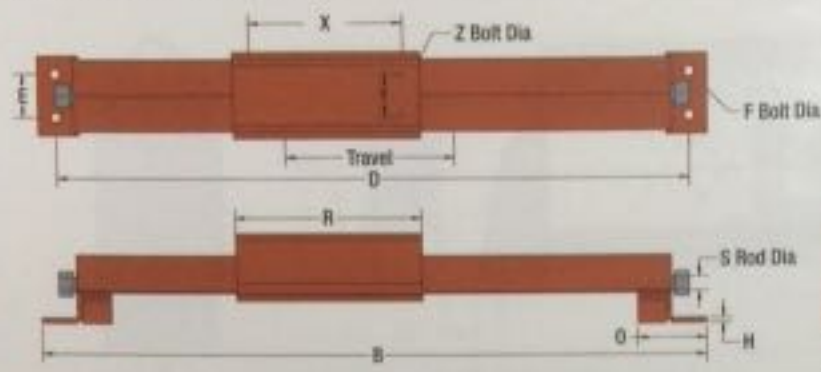


FIGURE 4.4-A TUHD BEARING BOLT PATTERN EX.



TABLE 7.4-A TUHD BOLT DIMENSIONS

Specs	Bearing Brand	
	Rexnord	Rexnord
Part Number	Rex ZEP-5215	ZAF-6307F
Bearing Size	2-5/16"	3-7/16"
Hole Pattern (2 or 4 Hole)	2 Bolt	4 Bolt
Dimension X	9-3/4"	13-1/8"
Dimension Y	-	2-3/8"
Z Bolt Diameter	3/4"	3/4"

TABLE 7.4 TUHD DIMENSIONS

Part Number	Travel	WT (Lbs)	B	C	D	E	F Bolt Dia	H	N	O	Q	R	S Rod Dia	W	X	Y	Z Bolt Dia
TUHD-200-12	12	49	31		29												
TUHD-200-18	18	55	37		35												
TUHD-200-24	24	61	43		41												
TUHD-200-30	30	67	49	5	47	2-1/2	5/8	1/4	5-1/4	4-1/4	4-5/8	11	1	6-1/16	*	*	*
TUHD-200-36	36	73	55		53												
TUHD-200-42	42	79	61		59												
TUHD-200-48	48	85	67		65												
TUHD-200-60	60	97	79		77												
TUHD-250-12	12	66	35-1/4		32-3/4												
TUHD-250-18	18	73	41-1/4		38-3/4												
TUHD-250-24	24	80	47-1/4		44-3/4												
TUHD-250-30	30	87	53-1/4	5-1/2	50-3/4	3	5/8	3/8	6-1/4	4-7/8	5	13-1/4	1	6-1/16	*	*	*
TUHD-250-36	36	94	59-1/4		56-3/4												
TUHD-250-42	42	101	65-1/4		62-3/4												
TUHD-250-48	48	108	71-1/4		68-3/4												
TUHD-250-60	60	122	83-1/4		80-3/4												
TUHD-300-12	12	85	38-1/4		35-1/2												
TUHD-300-18	18	92	44-1/4		41-1/2												
TUHD-300-24	24	99	50-1/4		47-1/2												
TUHD-300-30	30	106	56-1/4	6-1/2	53-1/2	3	3/4	1/2	7	6	6	14-1/4	1-1/4	6-7/8	*	*	*
TUHD-300-36	36	113	62-1/4		59-1/2												
TUHD-300-42	42	120	68-1/4		65-1/2												
TUHD-300-48	48	127	74-1/4		71-1/2												
TUHD-300-60	60	141	86-1/4		83-1/2												
TUHD-350-12	12	94	40		37-1/4												
TUHD-350-18	18	101	46		43-1/4												
TUHD-350-24	24	108	52		49-1/4												
TUHD-350-30	30	115	58	6-1/2	55-1/4	3	3/4	1/2	7	6	6	16	1-1/4	7-7/16	*	*	*
TUHD-350-36	36	122	64		61-1/4												
TUHD-350-42	42	129	70		67-1/4												
TUHD-350-48	48	136	76		73-1/4												
TUHD-350-60	60	150	88		85-1/4												
TUHD-400-12	12	117	44		41-1/4												
TUHD-400-18	18	126	50		47-1/4												
TUHD-400-24	24	135	56		53-1/4												
TUHD-400-30	30	144	62	6-1/2	59-1/4	3	3/4	1/2	7	6	7	20	1-1/4	7-1/4	*	*	*
TUHD-400-36	36	153	68		65-1/4												
TUHD-400-42	42	162	74		71-1/4												
TUHD-400-48	48	171	80		77-1/4												
TUHD-400-60	60	189	92		89-1/4												
TUHD-500-12	12	168	49-1/2		47												
TUHD-500-18	18	178	55-1/2		53												
TUHD-500-24	24	188	61-1/2		59												
TUHD-500-30	30	198	67-1/2	7	65	4	7/8	1/2	7-3/4	6	6-1/2	23-1/2	1-1/2	8	*	*	*
TUHD-500-36	36	208	73-1/2		71												
TUHD-500-42	42	218	79-1/2		77												
TUHD-500-48	48	228	85-1/2		83												
TUHD-500-60	60	248	97-1/2		95												
TUHD-600-12	12	269	57-3/4		54-1/4												
TUHD-600-18	18	282	63-3/4		60-1/4												
TUHD-600-24	24	296	69-3/4		66-1/4												
TUHD-600-30	30	308	75-3/4	10	72-1/4	6	1	1/2	10-1/4	10	10	25-3/4	2	10	*	*	*
TUHD-600-36	36	321	81-3/4		78-1/4												
TUHD-600-42	42	334	87-3/4		84-1/4												
TUHD-600-48	48	347	93-3/4		90-1/4												
TUHD-600-60	60	371	105-3/4		102-1/4												
TUHD-800-12	12	506	70-7/8		60-7/8												
TUHD-800-18	18	526	76-7/8		66-7/8												
TUHD-800-24	24	550	82-7/8		72-7/8												
TUHD-800-30	30	572	88-7/8	12	78-7/8	6	1-1/4	3/4	12-5/8	10-7/16	12	36	2-1/2	12-1/2	*	*	*
TUHD-800-36	36	594	94-7/8		84-7/8												
TUHD-800-42	42	616	100-7/8		90-7/8												
TUHD-800-48	48	638	106-7/8		96-7/8												
TUHD-800-60	60	682	118-7/8		108-7/8												

\*Consult Superior with bearing specifications, bearing holes can be drilled to order.